

**CEQA Response**  
**Analysis of Safety Issues**  
**For the**  
**Proposed Commuter Rail Service**  
**On the**  
**Riverside County Transportation Commission's Perris Valley Line**  
**in the Vicinity of the Highland and Hyatt Schools**

March 22, 2011

by



**ZETA-TECH**  
**A Harsco Rail Business Unit**  
**900 Kings Highway North**  
**Cherry Hill, New Jersey**  
**USA**  
**(856) 779-7795**  
**Fax: (856) 779-7436**

## **Introduction**

The San Jacinto Branch Line Commuter Rail (Perris Valley Line) Project is a 24 mile extension of the Metrolink 91 Line, currently providing service from Riverside to Fullerton and downtown Los Angeles.

The extension would begin at a junction with the Burlington Northern Santa Fe line, north of the City of Riverside and turn southeast along the San Jacinto Branch Line. The terminus of the line is in the City of Perris at Route 74 and Ethanac Road in Perris.

The San Jacinto Branch Line, purchased by the Riverside County Transportation Commission (RCTC) in 1993, runs parallel to I-215, one of the most heavily traveled and congested freeways in the region.

Upon start up, the Perris Valley Line Project will have four new stations. It will operate through three cities (Riverside, Moreno Valley, and Perris), bringing commuter rail service to major employment centers. The project will also provide communities such as Hemet, San Jacinto, Murrieta, Lake Elsinore, Menifee, Wildomar and Temecula closer access to the Southern California commuter rail network.

The Perris Valley Line will operate primarily on track used as a freight rail line for more than 120 years. Establishing Metrolink service on this track will transfer the responsibility of track maintenance, repair and the upkeep of rail right of way away from privately-owned railroad to the Southern California Regional Rail Authority (SCRRA), the public agency that operates Metrolink. The existing freight line will be rehabilitated and upgraded with new track, to include, rail, ties, and ballast.

Concerns have been raised regarding the potential for hazard and safety impacts caused by adding commuter trains to the existing rail line which sits no less than 25' from an existing 6" jet fuel pipeline, owned and operated by Kinder Morgan and which runs parallel to track in the vicinity of the Highland Elementary School. The jet fuel pipeline has been in place since 1972 and in one location is approximately 50' west of the Highland Elementary School.

Concerns have also been raised about whether there is an increased risk of derailment with the addition of commuter trains, especially in the area where the trains will pass by another existing school, the Hyatt Elementary School, and a residential neighborhood.

This report examines and analyzes the following questions.

1. Will the addition of commuter rail to the existing line significantly increase the safety risks in the vicinity of the Highland Elementary School and the Kinder-Morgan pipeline near that school?
2. Will the addition of commuter rail to the existing line significantly increase the safety risks in the vicinity of the Hyatt Elementary School?

### **Background and Line Characteristics**

The Perris Valley Line currently is used by BNSF to serve its shippers. The current operations consist of a daily local going upgrade and an empty return coming down the 2% grade. BNSF currently moves approximately 116 car loads a week, which is approximately 0.8 MGT traffic a year. The line is a single track line with 2% ruling grade and contains a series of 2 to 11 degree curve as shown in Figure 1. The right of way changes from 100 feet (total width) in some sections to 200 feet in many areas.

The current track varies from fair to poor condition, with areas of rail spalling on the gauge corner of the rail in the sharp curves and poor tie, fastener and ballast condition. There are several different sections of rails in place to include 90 lbs/yd., 115 lbs/yd., 119 lbs/yd. and 136 lbs/yd. These are scheduled to be completely replaced as part of the upgrade for commuter rail operations. Observation of the right of way indicated potentially unstable side slopes including some of sandstone. On several curves, silt was washed down during heavy rains and covered sections of 136 lbs. rail.

The current track condition is FRA Class 2. As a result, the general operating speed ranges up to a maximum speed of 20 mph.

The proposed commuter operation consists of approximately 12 trains per day, each train of approximately 640 tons in weight (see Table 1). This will increase the total traffic from the current 0.8 MGT per year of freight traffic to approximately 1.8 MGT per year of mixed passenger and freight traffic. Of these 1.8 MGT, 0.8 MGT will be the existing freight and 1 MGT will be commuter (passenger) traffic.

The proposed track upgrade includes replacing the existing rail with 136 RE Continuously Welded Rail (CWR), installation of new concrete ties with elastic fasteners, and new ballast. In addition, sixteen new crossings will be added together with a new signaling system and other upgrades to the right of way.

**Figure 1: Track Chart Showing Curvature and Grade**

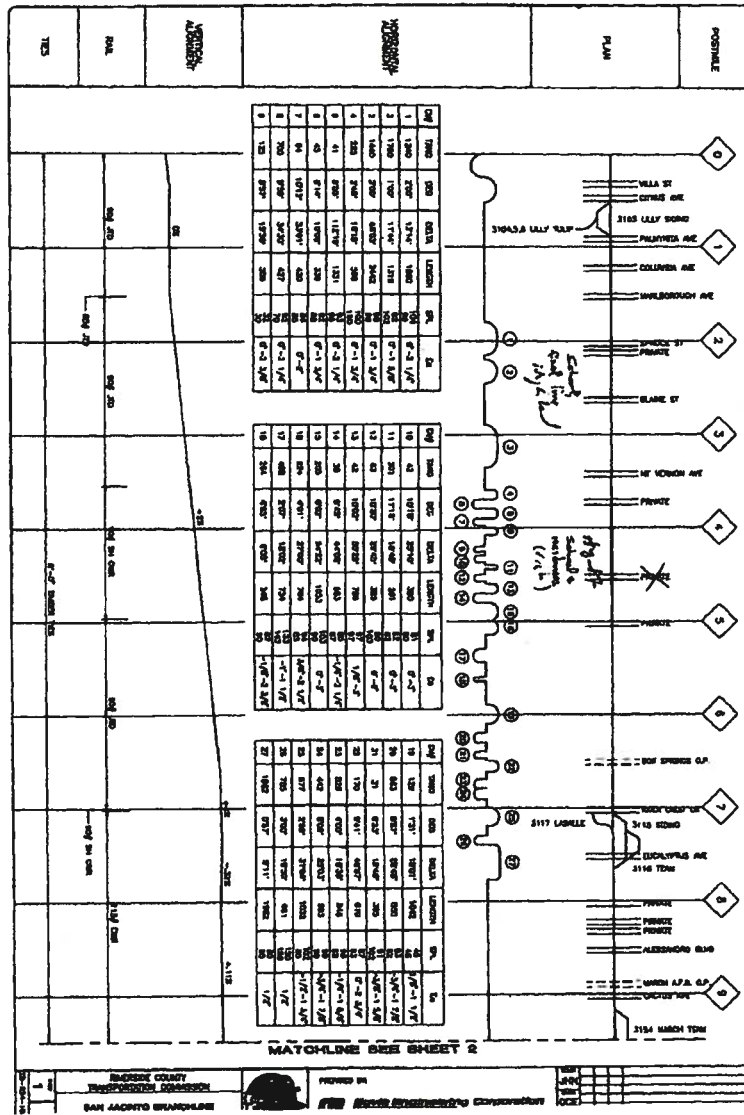


Table 1: Passenger Equipment Characteristics

|                                                   |          |
|---------------------------------------------------|----------|
| <b>Average weight of proposed passenger train</b> | 640 tons |
| <b>Passenger Car Dimensions</b>                   |          |
| Length                                            | 85'0"    |
| Width                                             | 9'10"    |
| Height                                            | 15'11"   |

**Question:**

Will the addition of commuter rail to the existing railway line significantly increase the safety risks in the vicinity of the Highland Elementary School and the Kinder-Morgan pipeline near that school?

It is our opinion that the addition of commuter rail to the existing railway line does not significantly increase the safety risks in the vicinity of the Highland Elementary School and the Kinder-Morgan pipeline near that school.

**Discussion:**

The Highland School is located in the vicinity of M.P. 2.5 in an area where the Kinder Morgan Jet Fuel Line high pressure pipeline is located between 25 and 75 feet from the track. Approximately 0.8 mgt of freight traffic currently operates on the existing line. The track in that area is on a 2% grade but is relatively straight with a one degree curve in the vicinity of the school and two degree curves approximately 0.5 miles away from the school in each direction. As noted before, as part of the addition of the commuter rail traffic, the track structure will be upgraded to new 136 RE CWR on concrete ties, elastic fasteners, and a new ballast section. Likewise, turnouts, grade crossings, and signal system will all be upgraded.

In order to address the question of increased risk associated with the addition of the passenger train operations, ZETA-TECH performed a derailment<sup>1</sup> risk analysis using all derailment classes in the FRA accident database for the years 2007 - 2009. Since the existing track is part of the BNSF railroad, data was restricted to Class 1 railroad

---

<sup>1</sup> The Federal Railroad Administration, Office of Railroad Safety, defines derailment as follows: "A derailment occurs when on-track equipment leaves the rails for a reason other than a collision, explosion, highway-rail grade crossing impact, etc." FRA Guide for Preparing Accident/Incident Reports, November 9, 2010.

operations and particularly to the four major US Class 1 railroads<sup>2</sup> using the most recent three full years of available data for these railroads. Table 1 shows total million gross ton-miles, total derailment and total derailments per million gross ton-miles.

**Table 1: Big Four Class I Railroad (BN, CSX, NS, UP) Derailment Data**

|                                   | 2007       | 2008       | 2009       | Average    |
|-----------------------------------|------------|------------|------------|------------|
| <b>MGTM<sup>3</sup> (Revenue)</b> | 1,660,525  | 1,670,478  | 1,440,530  | 1,590,511  |
| <b>Total Derailments</b>          | 1,517      | 1,430      | 1,059      | 1,335      |
| <b>Total Derailments/MGTM</b>     | 0.00091357 | 0.00085604 | 0.00073515 | 0.00083956 |

As can be seen from the above table average derailment probability per million gross ton miles is a very low number, 0.00084 derailments per million gross ton miles per year. Looking at the global risk of derailment in the vicinity of each school using this data, for a distance of one half mile in each direction, the total risk of derailment under current operations is 0.000672 or 1 derailment every 1500 years.

In order to compare the level of risk associated with the added passenger service to the base (existing) freight service, ZETA-TECH also performed a passenger train derailment risk analysis using all derailment classes in the FRA accident database for the years 2007 - 2009. Table 2 shows corresponding passenger train total million gross ton-miles, total derailment and total derailments per million gross ton-miles.

**Table 2: FRA Reported Passenger Derailment Data**

|                               | 2007       | 2008       | 2009       | Average    |
|-------------------------------|------------|------------|------------|------------|
| <b>MGTM (Revenue)</b>         | 90,237     | 100,643    | 112,074    | 100,985    |
| <b>Total Derailments</b>      | 33         | 32         | 33         | 33         |
| <b>Total Derailments/MGTM</b> | 0.00036570 | 0.00031796 | 0.00029445 | 0.00032348 |

As can be seen from the above table passenger train average derailment probability per million gross ton miles is an extremely low number of 0.00032 derailments per million gross ton miles per year. Using this data, the increased risk of derailment in the vicinity of each school, for a distance of one half mile in each direction, associated with the introduction of passenger service is 0.00032 or 1 derailment every 3000 years.

Thus, it can be seen that the incremental risk associated with the addition of the passenger traffic is very small.

However, since both a school and a pipeline are adjacent to the railroad right of way<sup>4</sup>, there is a very small risk of derailment associated with the rail operation. In order to assess the risk associated with the added passenger train operations in the event of a derailment, a derailment energy analysis was performed comparing the maximum

<sup>2</sup> BNSF is one of the four major US Class 1 railroads.

<sup>3</sup> 1 MGTM corresponds to 1 Million Gross Tons of traffic (MGT) moving 1 mile.

<sup>4</sup> The pipeline is between 25 and 75 feet from the track and the school is a further 50+ feet west of the pipeline.

available energy at the time of derailment of a freight train to that of a passenger train on this line.

The analysis is based on a 2300 ton freight train<sup>5</sup> traveling at 20 mph<sup>6</sup> compared to a 640 ton passenger train<sup>7</sup> operating at 30 mph<sup>8</sup>.

a. Freight train Energy Calculation

$$E = 1/2MV^2$$

Where:  $E^f$  = Energy of the freight system

$M$  = Mass of the train (W/g = 2300 tons/g)

$V$  = Maximum Velocity of the train (20mph)

b. Passenger train Energy calculation

$$E^p = 1/2MV^2$$

Where:  $E^p$  = Energy of the passenger system

$M$  = Mass of the passenger train (W/g = 640 tons/g)

$V$  = Maximum Velocity of the passenger train (30mph)

c. Ratio of passenger energy to freight energy

$$E^p/E^f = 0.626 = 62.6\%$$

From the energy ratios it can be seen that the passenger train will develop 63% of the energy developed by a freight train at this location should a derailment occur. This more than compensates for the small increase in derailment risk associated with the addition of the passenger trains, with a resulting combined risk of the order of 90% of the current freight operations<sup>9</sup>.

Thus, the addition of commuter rail to the existing railway line does not significantly increase the safety risks in the vicinity of the Highland Elementary School and the Kinder-Morgan pipeline near that school.

---

<sup>5</sup> A representative 16 car freight train with locomotive will weigh approximately 2300 tons.

<sup>6</sup> Current maximum freight train operating speed.

<sup>7</sup> The expected passenger consist of one locomotive, one cab car and four coach cars will weigh approximately 640 tons.

<sup>8</sup> The actual speed of operation is not finalized, however based on the curvature of the track, as shown in the track chart in Figure 1, it is expected that the passenger trains will be operating at 30 mph in this area.

<sup>9</sup> Based on the risk analysis presented here, it is recommended that passenger train speed be limited to 30 mph in the vicinity of the Highland School.

**Question:**

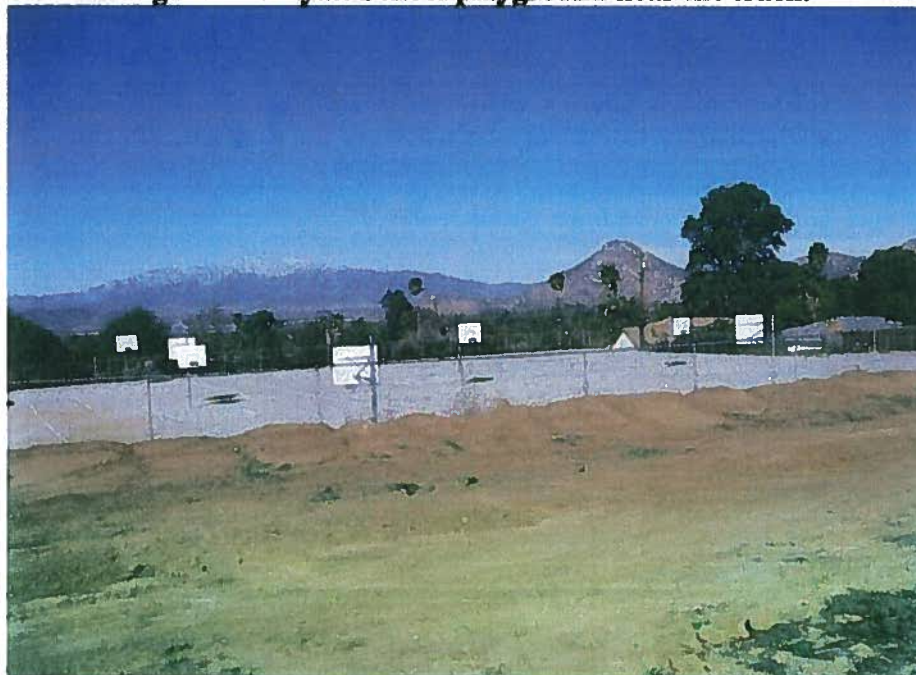
Will the addition of commuter rail to the existing railway line significantly increase the safety risks in the vicinity of the Hyatt Elementary School?

It is our opinion that the addition of commuter rail to the existing railway line does not significantly increase the safety risks in the vicinity of the Hyatt Elementary School.

**Discussion**

The Hyatt School is located in the vicinity of M.P. 4.6 on an 11 deg. curve and 2% grade, as shown in Figure 1. It is furthermore located in a zone of high curvature and heavy grade which includes several 10 and 11 degree curves in the vicinity of the school. The school playground is located at a lower elevation than the track elevation (see Figures 2A-C). The school board is concerned about derailment<sup>10</sup> risk which could result in railway vehicles encroaching on or near school property. There was a previous incident in the nearby residential area which resulted in some 45 gallon drums rolling down the hill into a home owner's pool.

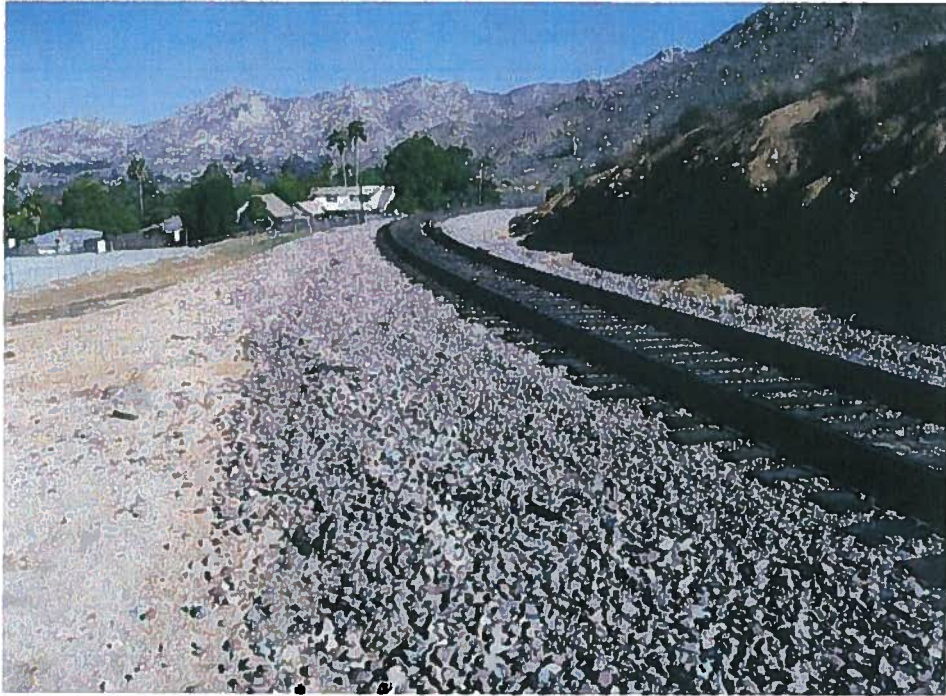
**Figure 2A: Hyatt School playground near the track.**



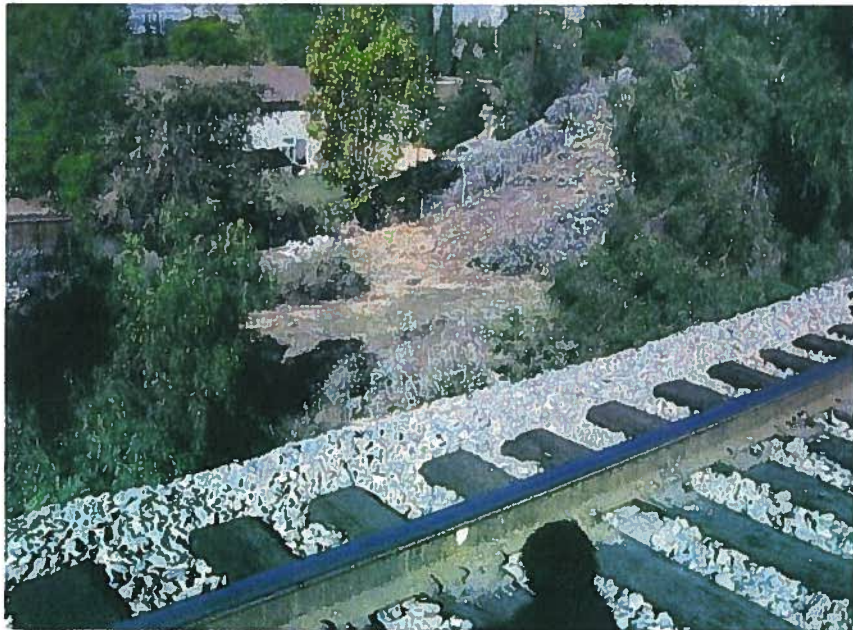
---

<sup>10</sup> The Federal Railroad Administration , Office of Railroad Safety, defines derailment as follows: "A derailment occurs when on-track equipment leaves the rails for a reason other than a collision, explosion, highway-rail grade crossing impact, etc." FRA Guide for Preparing Accident/Incident Reports, November 9, 2010.





**Figure 2B: Curve near Hyatt School**



**Figure 2C: Residential area near Hyatt School**

The key issue to be addressed here is the level of increased risk associated with the addition of passenger train operations. As noted before, as part of this addition of traffic, the track structure will be upgraded to new 136 RE CWR on concrete ties, elastic fasteners, and a new ballast section. Likewise, turnouts, grade crossings, and signal system will all be upgraded.

Therefore the issue is the increase in derailment risk associated with the new traffic.

In general, accidents and derailments can be divided into several major categories:

Track related derailments

Mechanical equipment related derailments

Human Factors related accidents and derailments

Signal System related derailments

Grade Crossing Accidents

Since both the signal system and the grade crossings will be upgraded to a higher overall standard and level of sophistication, the expectation is that the overall level of accident or derailment risk associated with these categories will be reduced because of the improved systems. This is consistent with experience on other passenger rail systems with the introduction of improved signal systems and grade crossing warning systems.

In the case of human factor related accidents and derailments; likewise, an improved signaling system will reduce the level of risk associated with this class of accidents as compared to the existing operations. This will be further enhanced by the improved braking capability of the passenger equipment with significantly shorter braking distances as compared to the existing freight operations. This will be discussed later in this report under Human Factors Risk.

Thus, the focus of this report will be on Track and Equipment related derailments.

As discussed previously, ZETA-TECH performed a baseline derailment risk analysis using all derailment classes in the FRA accident database for the years 2007 – 2009 for Class 1 freight railroad operations (Table 1) and for passenger rail operations (Table 2).

However, because of the severe nature of the track alignment in the vicinity of the Hyatt School, with severe grade and curvature conditions, a more detailed derailment analysis was performed focusing on the key potential high severity types of derailments for track

with these conditions of severe curvature and grade. The associated derailment risks were analyzed and evaluated based on the upgrade of the line and introduction of passenger train service.

Table 3 summarizes the highest risk classes of derailments by derailment category<sup>11</sup> for freight railroad operations. The first group of five is mechanical equipment related, the next group of three is track related and the last group of three is human factors related. Table 3 summarizes the number of derailments and the average derailments per MGTM by the different cause category for four largest Class I railroads, to include BNSF.

**Table 3: Big Four Class I Railroad (BN, CSX, NS, UP) Derailments by Category**

|                                        | 2007       | 2008       | 2009       | Average    | Avg. Derailments/<br>MGTM |
|----------------------------------------|------------|------------|------------|------------|---------------------------|
| <b>Mechanical</b>                      |            |            |            |            |                           |
| <b>Axles &amp; Journal Bearings</b>    | 42         | 33         | 27         | 34         | 0.0000214                 |
| <b>Truck Components</b>                | 48         | 57         | 37         | 47         | 0.0000298                 |
| <b>Wheels</b>                          | 44         | 48         | 39         | 44         | 0.0000275                 |
| <b>Brake</b>                           | 16         | 23         | 18         | 19         | 0.0000119                 |
| <b>Coupler &amp; Draft system</b>      | 11         | 18         | 15         | 15         | 0.0000092                 |
| <b>Track</b>                           |            |            |            |            |                           |
| <b>Track Geometry</b>                  | 249        | 232        | 176        | 219        | 0.0001377                 |
| <b>Rail, Joint bar, Rail anchoring</b> | 244        | 224        | 145        | 204        | 0.0001285                 |
| <b>Roadbed</b>                         | 32         | 29         | 18         | 26         | 0.0000166                 |
| <b>Human Factors</b>                   |            |            |            |            |                           |
| <b>Use of Brake</b>                    | 28         | 25         | 22         | 25         | 0.0000157                 |
| <b>Speed</b>                           | 45         | 29         | 34         | 36         | 0.0000226                 |
| <b>Train Handling, make-up</b>         | 85         | 64         | 56         | 68         | 0.0000430                 |
| <b>Total</b>                           | <b>844</b> | <b>782</b> | <b>587</b> | <b>738</b> | <b>0.0004638</b>          |

In reviewing these specific derailment risk areas, it can be seen that the track geometry and rail joint bar/rail anchoring category have the highest derailment rate value. These will be addressed in detail under Track Caused Derailments.

Table 4 summarizes these same derailment categories for passenger train derailments.

**Table 4: Passenger Derailments by Category**

|                                     | 2007 | 2008 | 2009 | Average | Avg Derail./<br>MGTM |
|-------------------------------------|------|------|------|---------|----------------------|
| <b>Axles &amp; Journal Bearings</b> | 1    | 0    | 0    | 0.33    | 0.0000033            |
| <b>Truck Components</b>             | 0    | 0    | 0    | 0.00    | 0.0000000            |
| <b>Wheels</b>                       | 0    | 0    | 2    | 0.67    | 0.0000066            |
| <b>Brake</b>                        | 0    | 0    | 0    | 0.00    | 0.0000000            |
| <b>Coupler &amp; Draft system</b>   | 0    | 0    | 0    | 0.00    | 0.0000000            |

<sup>11</sup> It should be noted that Frog and Switch associated derailments are another high derailment category, however, there are no turnouts, frogs or switches in the vicinity of the Hyatt School and as such this category was omitted from consideration here.

|                                      |           |          |           |              |                  |
|--------------------------------------|-----------|----------|-----------|--------------|------------------|
| <b>Track Geo.</b>                    | <b>9</b>  | <b>5</b> | <b>8</b>  | <b>7.33</b>  | <b>0.0000726</b> |
| <b>Rail Joint bar Rail anchoring</b> | <b>1</b>  | <b>2</b> | <b>3</b>  | <b>2.00</b>  | <b>0.0000198</b> |
| <b>Roadbed</b>                       | <b>0</b>  | <b>0</b> | <b>0</b>  | <b>0.00</b>  | <b>0.0000000</b> |
| <b>Use of Brake</b>                  | <b>1</b>  | <b>0</b> | <b>1</b>  | <b>0.67</b>  | <b>0.0000066</b> |
| <b>Speed</b>                         | <b>3</b>  | <b>2</b> | <b>0</b>  | <b>1.67</b>  | <b>0.0000165</b> |
| <b>Train Handling, make-up</b>       | <b>0</b>  | <b>0</b> | <b>0</b>  | <b>0.00</b>  | <b>0.0000000</b> |
| <b>Total</b>                         | <b>15</b> | <b>9</b> | <b>14</b> | <b>12.67</b> | <b>0.0001255</b> |

In all cases the derailment risk associated with passenger train operation is less than for freight operations, with most of the cases being 5 to 10 times lower risk levels.

In order to better understand the risks of passenger derailments, the key potential high severity types of derailments were analyzed and evaluated based on the upgrade of the line and introduction of passenger train service. Note, this analysis refers specifically to the track in the vicinity of the Hyatt School which is a severe curvature, severe grade environment with existing freight train operations.

The following sections address each of the three major areas.

### **Mechanical Caused Derailments**

Mechanical caused derailments refer to derailments caused by railway vehicles to include locomotives, freight cars and passenger cars.

As can be seen in Table 3, wheels, axles and trucks are the largest individual risk areas. However, these risk areas are for the heavily loaded freight cars with individual car weights of the order of 130 to 140 tons and axle loads of the order of 33 to 36 tons. Passenger cars have significantly lower weights and axle loads with the proposed cars to be used for this service to be of the order of 80 to 100 tons weight and 20 to 25 ton axle loads.

Furthermore, most wheel and brake problems occur on severe grades for heavy freight trains with train weights of the order of several thousand tons as opposed to the proposed passenger train weight of 640 tons. Thus the major braking and wheel overheating problems most commonly associated with freight operations do not carry over into the lighter passenger train operations, and even more specifically the proposed passenger train operations on this line. This can be clearly seen in the significantly reduced passenger train derailment risk (Table 4) for axles and bearing (passenger risk is 15% of freight risk), wheels (passenger risk is 24% of freight risk) as well as for the truck and brake categories which show no passenger train reported derailments in the data set.

This is consistent with the design of the passenger car trucks, suspension systems, and braking systems, which are designed to provide a level of risk significantly below that of the freight car systems.

## **Human Factor Caused Accidents and Derailments**

Human factor caused accidents and derailments include both operator related and train make up related accidents and derailments. These include the three categories shown in Tables 3 and 4 which include two operator related categories; speed and use of brake, and one train makeup category. The latter category is primarily associated with freight rail operations, as can be seen in total lack of accidents or derailments associated with passenger train operations in Table 4.

For the two operator related categories presented; it is again noted that significant reduction in accident/derailment rate is observed in the passenger related operations, with the passenger related risk of the order of 40% of the freight train related risk for use of brake related incident and 70% for speed related incidents. It should be further noted that since this is a high curvature area, train speeds are reduced to 25 mph for passenger trains (and 20 mph and less for freight), thus further reducing the speed associated derailment risks.

Here again, improved signal systems, to be installed as part of the overall system upgrade for the passenger operations will significantly reduce any derailment risk.

## **Track Caused Derailments**

In the case of the track caused derailments, the overall condition of the line will be improved significantly because of a full track upgrade replacing all rail with new 136 RE CWR and all ties and fasteners with new concrete ties and elastic fasteners.

As can be seen in Table 3, rail, and track geometry cause categories are the largest individual risk areas<sup>12</sup>. However, as noted previously, these risk areas are for the heavily loaded freight cars with individual car weights of the order of 130 to 140 tons and axle loads of the order of 33 to 36 tons. Passenger cars have significantly lower weights and axle loads with the proposed cars to be used for this service to be of the order of 80 to 100 tons weight and 20 to 25 ton axle loads. Thus, the risks associated with the new passenger service are well below that of existing rail operations; i.e. 15% of the freight rail risk for rail related derailments, and 50% for track geometry.

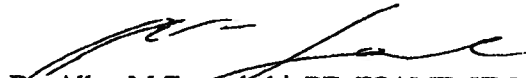
Focusing on the key derailment risk areas associated with the track in the vicinity of the Hyatt School, the increase in derailment associated with the addition of passenger trains on to the existing route is 0.0001255 derailments per year or one derailment every 8000 years.

Thus, the addition of commuter rail to the existing railway line does not significantly increase the safety risks in the vicinity of the Hyatt Elementary School.

---

<sup>12</sup> As noted previously, turnout related derailments are also a major derailment category but are not relevant here since there are no turnouts in the vicinity of the Hyatt School.

**Respectfully Submitted**



**Dr. Allan M Zarembski, PE, FSAME, HMAREMA  
Vice President and General Manager  
ZETA-TECH  
A Harsco Rail Business Unit**

**ALLAN M. ZAREMBSKI Ph.D., P.E., F.A.S.M.E.**  
**Vice President and General Manager**

---

**Summary of Qualifications:**

Over thirty years of professional engineering responsibility. Extensive experience in all areas of rail operations to include freight operations, transit, commuter and inter-urban. Internationally recognized expertise in the area of railway track and structures, vehicle-track dynamics, failure and failure analysis, safety, railway operations, and maintenance. Consulting services provided to virtually all major rail operations in North America together with numerous operations worldwide.

**PROFESSIONAL HISTORY:**

September 2007  
to present

**ZETA-TECH, an Independent Business Unit of Harsco Rail**

Vice President and General Manager

Directed activities in track maintenance planning and planning software, vehicle-track dynamics and interaction, rail and track analyses, economic analyses of railroad operations, and railway costing. Special areas of activity include rail maintenance, rail grinding, railroad track structure, vehicle-track dynamics, fatigue and failure analysis, safety, and risk management.

1984  
to 2007

**ZETA-TECH Associates, Inc., Cherry Hill, New Jersey**

President

Directed activities in track maintenance planning and planning software, vehicle-track dynamics and interaction, rail and track analyses, economic analyses of railroad operations, and railway costing. Special areas of activity include railroad track structure, vehicle-track dynamics, fatigue and failure analysis, safety, and risk management.

1981 -  
1984

**Pandrol Inc./Speno Rail Services Co.**

Director Research & Development

Dual responsibility for both companies in directing all research and development activities for new products, new systems, and future corporate activities. Reported directly to the President. Responsible for all railroad technology activities including product application, advertising, and technical support.

1976 -  
1981

**Association of American Railroads**

Manager - Track Research Division

December 1978 to September 1981

Directed Division Responsible for conducting major research programs on railroad track. Directed AAR Track Laboratory. Conducted extensive field and laboratory tests as well as analytical research programs.

Assistant Manager - Track Research Division

August 1978 to December 1978

Initiated major research programs in Track Strength, Rail Fatigue, Ballast Failure Mechanisms, etc.

Senior Research Engineer

August 1976 to August 1978

Responsible for research programs on freight car fatigue design, rail overturning, and track gage widening. Developed industry standard methodology for fatigue design of freight cars. Developed test plans and procedures for AAR Track Laboratory.

1975 -  
1976

**Princeton University**

Research Associate - Dept. of Civil Engineering

Conducted research activities in the area of lateral (railroad) track deformation and track buckling. Conducted laboratory tests at civil engineering laboratory.

1971 -  
1973

**Grumman Aerospace Corp.**

Engineer

Responsibility for design and analysis of military aircraft structural components. Also conducted dynamic analyses of aircraft structures.

**EDUCATION:**

Sept. 1975

Ph.D. Civil Engineering; Princeton University

June 1974

M. A. Civil Engineering; Princeton University

Jan. 1973

M. S. Engineering Mechanics; New York University

Jan. 1971

B. S. (Magna Cum Laude) Aeronautics and Astronautics; New York University

**PROFESSIONAL AFFILIATIONS:**

Registered Professional Engineer: NJ, NY, PA, IL, MD

**MEMBER:**

American Railway Engineering and Maintenance of Way Association  
(Honorary Member)

American Society of Mechanical Engineers (Fellow)

American Society of Civil Engineers

**HONORS AND AWARDS:**

Elected Honorary Member of American Railway Engineering and Maintenance of Way Association (AREMA) in 2010



Received Federal Railroad Administration's SPECIAL ACT AWARD,  
February 2001

Elected Fellow of the American Society of Mechanical Engineers in 2000

1992 Rail Transportation Award, American Society of Mechanical  
Engineers

Associate Editor, Railway Track and Structures Magazine, January 1985  
to 1996. Author of monthly column; "Tracking R&D"

Adjunct Assistant Professor, Department of Civil Engineering, Illinois  
Institute of Technology 1980 - 1981

Instructor: Railroad Engineering Continuing Education Courses  
Institute for Railroad Engineering; 1984 – 2004  
George Washington University; 1980 - 1981  
University of Wisconsin at Madison; 1978 -1981

Member: National Academy of Sciences, National Materials Advisory  
Board; Committee on Nondestructive Testing of Longitudinal Force in  
Rails

Member: Office for Research and Experiments of the International Union  
of Railway; Committee D150

Delegate: American Railway Engineering Association Railroad Delegation  
to the Peoples Republic of China, 1983

Deputy Director - International Government Industry Research Program on  
Track Train Dynamics

Patent (Pending): Automated Turnout Inspection

Author of over 160 papers on railroad track analysis and behavior, rail  
fatigue, and freight car design and analysis

Author of over 130 articles on railway operations and maintenance,  
published in all of the major U.S. and international (English speaking)  
industry publications

Author of the book Tracking R&D: Research and Development, Simmons  
Boardman, Omaha, NE, 1993

Author of the book The Art and Science of Rail Grinding, Simmons  
Boardman, Omaha, NE, 2005

## **DR. ALLAN M. ZAREMBSKI**

### **BOOKS**

1. Zarembski, A.M., Tracking R&D, Research & Development, **Simmons-Boardman Books, Inc.**, Omaha, NE, March 1993
2. Zarembski, A.M., The Art and Science of Rail Grinding, **Simmons-Boardman Books, Inc.**, Omaha, NE, August 2005

### **BOOK CHAPTERS**

1. The Railroad: What It Is, What It Does, Chapter 3: The Track: Alignment and Structure, **Simmons Boardman Books, Inc. 2008**
2. Guidelines to Best Practices for Heavy Haul Railway Operations, Chapter 6.7 Maintenance Management Analysis Tools, **International Heavy Haul Association, 2009**

### **PUBLICATIONS**

1. Zarembski, A. M., "Rail Rollover - The State of the Art", **Bulletin of the American Railway Engineering Association, Bulletin 664, Volume 79**, September - October 1977.
2. Zarembski, A. M., "Freight Car Environment Characterization for Fatigue Life Analysis", **Track/Train Dynamics and Design, Advanced Techniques**, Pergamon Press, N.Y., 1978.
3. Garg, V. K., Prasad, B., & Zarembski, A. M., "Structural Dynamic Analysis & Fatigue Life Prediction of a Flat Car", **1977 Technical Proceedings 14th Annual Railroad Engineering Conference**, Pueblo, CO, March 1978.
4. Abbott, R. A., & Zarembski, A. M., "On the Prediction of the Fatigue Life of Rails", **Bulletin of the American Railway Engineering Association**, Bulletin 666, Volume 79, January - February 1978, p.p. 191-203.
5. Zarembski, A. M., & Abbott, R. A., "Fatigue Analysis of Rail Subject to Traffic and Temperature Loading", **Heavy Hauls Railways Conference**, Perth, Western Australia, September 1978.
6. Zarembski, A. M., "On the Nondestructive In Track Measuring the Longitudinal Force", **Conference on Nondestructive Techniques for Measuring the Longitudinal Force in Rails**, Washington, D.C., February 1979.

7. Zarembski, A. M., "Effect of Rail Section and Traffic on Rail Fatigue Life", **American Railway Engineering Association, 78th Annual Technical Conference**, Chicago, IL, March 1979.
8. McConnell, D. P., Zarembski, A. M., & Lovelace, W. S., "Track Strength Characterization Program an Overview", **American Railway Engineering Association, 78th Annual Technical Conference**, Chicago, IL, March 1979.
9. Darien, N. J., & Zarembski, A. M., "Railroad Freight Equipment Load Environment Testing", **25th International Instrumentation Symposium**, Anaheim, CA, May 1979.
10. Torkamani, M. A. M., Bhatti, M. H., & Zarembski, A. M., "Dynamic Rail Overturning: Modeling and Application", **Third ASCE/EMD Specialty Conference**, Austin, TX, September 1979.
11. Zarembski, A. M., & Rassasian, M., "Track Gage Widening A Model Study", **Transportation Engineering Journal**, American Society of Civil Engineers, November 1979.
12. Choros, J., & Zarembski, A. M., "Track Strength Vehicle Testing on High Curvature Mainline Track", **Rail International**, July 1982.
13. Abbott, R. A., & Zarembski, A. M., "Longer Rail Life is Goal", **Modern Railroads**, December 1978.
14. Torkamani, M. A. M., Bhatti, M. H., & Zarembski, A. M., "Dynamic Rail Overturning: Modeling", **Rail International**, September 1980.
15. Torkamani, M. A. M., Bhatti, M. H., & Zarembski, A. M., "Dynamic Rail Overturning: Application", **Rail International**, October 1980.
16. Zarembski, A. M., "On the Feasibility of Continuous Measurement of Track Gauge Restraint", **Rail International**, July - August 1980.
17. Zarembski, A. M., "Rail Research: Meeting the Challenge of Modern Traffic Loading", Annual Meeting of the **Transportation Research Board**, January 1980. (Transportation Research Record 744).
18. Halcomb, S., & Zarembski, A. M., "Freight Car Fatigue Analysis: Guidelines and Application", **Track Train Dynamics Conference**, Chicago, IL, November 1979.
19. Lovelace, W. S., & Zarembski, A. M., "Future Directions in Track Evaluation and Inspection", **Track Train Dynamics Conference**, Chicago, IL, November 1979.
20. Zarembski, A. M., & Choros, J., "On the Measurement and Calculation of Vertical Track Modulus", **Bulletin of the American Railway Engineering Association**, Bulletin 675, Volume 81, November - December 1979.

21. Zarembski, A. M., & Choros, J., "Laboratory Investigation of Track Gauge Widening", **Bulletin of the American Railway Engineering Association**, Bulletin 676, Volume 81, January-February 1980.
22. Zarembski, A. M., McConnell, D. P., & Lovelace, W. S., "New Car for Measurement and Evaluation of Gage-Widening Resistance of Track", **American Railway Engineering Association, 79th Annual Technical Conference**, Chicago, IL, March 1980. (Bulletin 678, Volume 81, June - July 1980).
23. Kerr, A. D., & Zarembski, A. M., "The Response Equations for a Cross-tie Track", **ACTA Mechanical**, 40, 253-276, 1981.
24. Zarembski, A. M., & Choros, J., "Field Evaluation of Mainline Quality Track Using a Track Strength Test Vehicle", **Bulletin of the American Railway Engineering Association**, Bulletin 680, Volume 82, November - December 1980.
25. Zarembski, A. M., "The Track Modulus", **Roadmasters' and Maintenance of Way Association of America, Ninety-Third Annual Conference**, Chicago, IL, September 1981.
26. Zarembski, A. M., "The Direct Inspection of Track", **Railway Track and Structures**, November 1980.
27. Bhateja, R., & Zarembski, A. M., "Determination of Track Gage Widening Parameters", **International Conference on Computing in Civil Engineering**, New York, N. Y., May 1981.
28. Zarembski, A. M., & Magee, G., "An Investigation of Railroad Maintenance Practices to Prevent Track Buckling", **American Railway Engineering Association 80th Annual Technical Conference**, Chicago, IL, March 1981 (published in Bulletin 684, September 1981).
29. Webb, H. G., Wells, T., & Zarembski, A. M., "Track Maintenance Research Program: An Overview", **American Railway Engineering Association 80th Annual Technical Conference**, Chicago, IL, March 1981.
30. Zarembski, A. M., "Effect of Increasing Axle Loads on Rail Fatigue Life", **Bulletin of the American Railway Engineering Association**, Bulletin 685, Volume 83, November - December 1981.
31. Zarembski, A. M., et al, "The Effect of Increasing Axle Loads on Rail Fatigue Life", **Rail Technology: Proceedings of the Joint BR/AAR Seminar**, Frederick and Round, Nottingham, England, 1983.
32. Armstrong, Wells, Stone, & Zarembski, "Impact of Car Loads on Rail Defect Occurrences", **Second International Heavy Haul Railway Conference**, Colorado Springs, CO, September 1982.

33. Zarembski, A. M., "Performance Characteristics for Concrete Tie Fasteners", **Concrete Tie Systems for the 1980's**, Skokie, IL, November 1983.
34. Manos, Scott, Choros, & Zarembski, "Development of an Improved Vehicular Loading Characterization Associated with the Gage Strength of Track", **Bulletin of the American Railway Engineering Association**, Bulletin 686, Volume 83, January - February 1982.
35. Zarembski, A. M., "Performance Characteristics for Wood Tie Fasteners", **Bulletin of the American Railway Engineering Association**, Bulletin 697, Volume 85, October 1984, p.p. 341-369.
36. Zarembski, A. M., "The Impact of Rail Surface Defects", **Railway Track and Structures**, November 1984.
37. Zarembski, A. M., "The Economics of Rail Grinding and Rail Surface Maintenance", **Third International Heavy Haul Railway Conference**, Vancouver, British Columbia, October 1986.
38. Lamson, S. T., Zarembski, A. M., & Taylor, E. H., "Profile Grinding on CP Rail", **Joint British Rail/Association of American Railroads Seminar on Vehicle Track Interaction**, Princeton, NJ, April 1984.
39. Kerr, A. D., & Zarembski, A. M., "On the New Equations for the Cross-Tie Track Response in the Lateral Plane", **Rail International**, Number 6, 1986.
40. Zarembski, A. M., "Performance Characteristics for Concrete Tie Fasteners", **Rail International**, March 1987.
41. Zarembski, A. M., "The Relationship Between Rail Grinding and Rail Lubrication", **Second International Symposium on Wheel/ Rail Lubrication**, Memphis, TN, June 1987.
42. Zarembski, A. M., Izbinsky, G., Handal, S. N., & Worthington, W. M., "Corrugation Behavior in the Freight Railroad Environment", **American Railway Engineering Association (presented at the March 1987 Annual Conference, Chicago)**, Bulletin 712, Vol. 88, October 1987.
43. Zarembski, A. M., "The Evolution and Application of Rail Profile Grinding", **Bulletin of the American Railway Engineering Association**, Bulletin 718, Volume 89, December 1988.
44. Zarembski, A. M., "Track Maintenance Planning Using Forecasting Software", **Railway Technology International**, 1988.
45. Zarembski, A. M., & Masih, J. T. A., "On the Development of Computer Model for the Economic Analysis of Alternate Tie/Fastener Configuration", **American Railway Engineering Association (presented at the March 1989 Annual Conference, Chicago)**.

46. Newman, R. R., Zarembski, A. M., Resor, R. R., "Burlington Northern's Assessment of the Economics of High Capacity/Heavy Axle Load Cars", **Bulletin of the American Railway Engineering Association**, Bulletin 726, Volume 91, May 1990.
47. Newman, R. R., Zarembski, A. M., & Resor, R. R., "The Effect of Increased Axle Loads on Maintenance of Way and Train Operations at Burlington Northern", **International Heavy Haul Association /Transportation Research Board Workshop**, Vancouver, B.C., June 1991.
48. Zarembski, A. M., "Forecasting of Track Component Lives and its Use in Track Maintenance Planning", **International Heavy Haul Association/Transportation Research Board Workshop**, Vancouver, B.C., June 1991.
49. Zarembski, A. M., "Track Maintenance Planning For Short Lines, Regionals", **Modern Railroads Short Lines and Regionals**, October 1988.
50. Zarembski, A. M., Palese, J. W., & Martens, J. H., " The Effect of Improved Rail Manufacturing Process on Rail Fatigue Life", **American Railway Engineering Association**, Bulletin 733, Volume 92, December 1991.
51. Newman, R. R., Zarembski, A. M., & Resor, R. R., "Economic Implications of Heavy Axle Loads on Equipment Design Operations and Maintenance", **American Society of Mechanical Engineering**, WAM, RTD-Volume 4, Rail Transportation, December 1991.
52. Zarembski, A. M., "Wood Tie Fastener Performance Requirements: The User's Points of View", **Symposium on Elastic Track Fasteners**, American Railway Engineering Association, Omaha, NE, June 1992.
53. Resor, R. R., & Zarembski, A. M., "Development of Track Maintenance Planning Models for Rail Rapid Transit Systems", **Computers in Railways III, Proceedings of the Third International Conference (COMPRAIL 92)**, Vol. I: Management (Computational Mechanics Publications, Boston, 1992).
54. Zarembski, A. M., "Rail Life Analysis and its Use in Planning Track Maintenance", **Railway Technology International**, 1993.
55. Zarembski, A. M., "Determining the Cost of Track Maintenance", **Railway Track and Structures**, April 1993.
56. Zarembski, A. M., "Transit Rail Wear Standards", **American Public Transit Association**, Miami, June 1993.
57. Zarembski, A. M., & Palese, J. W., "Rail Maintenance Planning Using Computerized Rail Forecasting Models", **Conference on Track Maintenance Practices on Suburban and Mass Transit Railways**, Hong Kong, June 1993.

58. Zarembski, A. M., "Forecasting of Future Tie Requirements by Computer Modeling", **Crossties**, July/August 1993.
59. Zarembski, A. M., & Bohara, A. P., "Controlling Rail and Wheel Wear on Commuter Operations", **American Railway Engineering Association**, Bulletin 742, Volume 94, October 1993.
60. Zarembski, A. M., & McCarthy, W. T., "Development of Non-Conventional Tie and Track Structure Inspection Systems", **Workshop on Innovations in Maintenance of Way Work Equipment, Cosponsored by Transportation Research Board and Roadmasters and Maintenance of Way Association**, Denver, CO, September 1993. Also published in "Transportation Research Record No. 1489: Rail", Railroad Transportation Research, Transportation Research Board, National Research Council, Washington, DC, 1995.
61. Zarembski, A. M., & McCarthy, W. T., "Testing Track Strength and Wood-Tie Condition", **Railway Track and Structures**, September 1993.
62. Zarembski, A. M., "Track Maintenance Costing: Alternative Approaches", **Conference on Maintaining Railway Track; Determining Cost and Allocating Resources**, Arlington, VA, October 1993.
63. Zarembski, A. M., "Concrete vs. Wood Ties: Making the Economic Choice", **Conference on Maintaining Railway Track; Determining Cost and Allocating Resources**, Arlington, VA, October 1993.
64. Zarembski, A. M., "Incremental Costs Incurred for Track Maintenance", **Conference on High Speed Trains on Freight Railroads**, Washington, D.C., November 1994.
65. Zarembski, A. M., "Computerized Maintenance Planning and Reporting Systems", **Rail Transit '95: Design, Construction and Maintenance of Transit Track and Structures**, New York, NY, June 1995.
66. Zarembski, A. M., "Development of Rail Gage Face Angle Standards to Prevent Wheel Climb Derailments", **American Railway Engineering Association Annual Technical Conference**, Chicago, IL, March 1996.
67. Zarembski, A. M., "On the Use of Timber Sleepers in Main Tracks", **World Railway Equipment and Technology Update 1996/1997**, Kensington Publications Ltd., London, England, 1996.
68. Zarembski, A. M., "On the Benefits of Rail Maintenance Grinding", **American Railway Engineering Association Annual Technical Conference**, Bulletin 760, Volume 98, Chicago, IL, March 1997.
69. Zarembski, A. M., Holfeld, D. R., and Palese, J. W., "On the Derailment of Rail Vehicles Through Turnouts: A Review of Derailment Causes and Mechanisms", **American Railway Engineering Association Turnout Symposium**, Chicago, IL, August 1996.

70. Zarembski, A. M., "Track Inspection: Knowing What is Out There", **Railway Track and Structures 1997 Track Buyers Guide**, Chicago, IL, 1997.
71. Zarembski, A. M., "Modern Rail Grinding Techniques: Selecting the Proper Grinding Approach", **Railway Gazette International**, London, England, February 1997.
72. Zarembski, A. M., Holfeld, D. R., and Palese, J. W., "Derailment of Transit Vehicles in Turnouts", **Transportation Research Board Annual Meeting**, Washington, DC, January, 1997.
73. Zarembski, A. M., "Recent Developments in Maintenance Planning Systems", **Railway Track and Structures**, Chicago, IL, February 1997.
74. Zarembski, A. M. and Holfeld, D. R., "On the Prediction of the Life of Wood Crossties", **American Woodtie Preservers Association Conference**, Pittsburgh, PA, April 1997.
75. Zarembski, A. M. and Holfeld, D. R., "On the Prediction of the Life of Wood Crossties", **Crossties Magazine**, May/June and July/August, 1997.
76. Holfeld, D. R., and Zarembski, A. M., "Knowledge Transfer: Utilizing New Technologies" **Sixth International Heavy Haul Railway Conference**, Capetown, South Africa, April 1997.
77. Zarembski, A. M., "Development and Implementation of Integrated Maintenance Planning Systems", **Transportation Research Board Annual Meeting**, Washington, DC, January, 1998.
78. Zarembski, A.M., and Gauntt, J.C., "Evaluation of Life Cycle Costs of Alternate Tie (Sleeper)/Fastener Systems and Their Use in Defining Maintenance Policy and Practice", **WCRR Conference**, Florence, Italy, November 1997.
79. Zarembski, A.M, "The Economics of Increasing Axle Loads", **European Railway Review**, London, England, June 1998.
80. Zarembski, A.M., "Enhanced Tie Condition Inspection Using Hand Held Recording Systems", **Crossties Magazine**, August 1998.
81. Zarembski, A.M., Thornton, D., Palese, J.W., Forte, N., "Development and Implementation of RailGraph; A Field Deployable Rail Maintenance Management Tool", **American Railway Engineering Maintenance Association Annual Technical Conference**, 1998.
82. Zarembski, A.M., and Paulsson, Bjorn, "Introduction of Heavy Axle Loads in Europe: Economics of 30 Tonne Axle Load Operations on the Malmbanan", **European Railway Review**, 1998



83. Zarembski, A.M, Palese, J.W., and Katz, Leonid "Implementation of a Dynamic Rail-Highway Grade Crossing Transition", **Transportation Research Board Annual Meeting**, Washington, DC, January, 1999.
84. Zarembski, A.M, "Determination of Future Crosstie Requirements from Gage Strength Measurements", **Crossties Magazine**, March/April 1999.
85. Zarembski, A.M. Chiddick, A.S. "Application of New Lubricant Formulations For The Reduction of Wheel Squeal Noise Under Freight and Passenger Service", **American Society of Mechanical Engineers Joint Technical Conference with AREMA**, September 1999
86. Zarembski, A.M., "Use of Track Strength Data in the Determination of Future Crosstie Requirements", **American Railway Engineering Maintenance Association Annual Technical Conference**, September 1999
87. Zarembski, A.M, & Palese, J.W., "Application of Maintenance of Way Information Systems to Enhance Operations and Safety". **Passenger Transport, American Public Transit Association**, October 1999.
88. Bonaventura, Clifford S., Palese, Joseph W. & Zarembski, A.M., "Intelligent System for Real-Time Prediction of Railway Response to the Interaction with Track Geometry". **American Society of Mechanical Engineers, 2000 Spring ASME/IEEE Joint Rail Conference**, April 2000.
89. Gauntt, J.C., & Zarembski, A.M., "Analysis of Wood Cross-Tie Price Sensitivities". **American Railway Engineering Maintenance Association Annual Technical Conference**, September 2000.
90. Zarembski, A.M., "The Implications of Heavy Axle Load Operations for Track Maintenance on Short Lines". **American Railway Engineering Maintenance Association Annual Technical Conference**, September 2000.
91. Zarembski, A.M., & Blaze, J., "Small Roads and Heavy Loads". **Railway Age Magazine**, April 2000.
92. Zarembski, A.M., & Kondapalli, Sunil K., "Ballast Shoulder Cleaning: Issues and Economics", submitted for publication **Railway Age Magazine**, June 2000.
93. Resor, R.R., Zarembski, A.M., & Patel, P.K., "An Estimation of the Investment in Track and Structures Needed to Handle 286,000 lb. Rail Cars on Short Line Railroads", **Transportation Research Board**, 2000.
94. Palese, J.W., & Zarembski, A.M., "BNSF Tests Risk-Based Ultrasonic Detection", published **Railway Track & Structures Magazine**, February 2001.

95. Zarembski, A.M., Palese, J.W., & Bell, J.G., "Limiting High Speed Dynamic Forces on the Track Structure; The Amtrak Acela Case", **American Railway Engineering Maintenance Association Annual Technical Conference**, Sept 2001.
96. Redden, J.W.P., Selig, E.T. & Zarembski, A.M., "Design Considerations in Stiff Track Modulus Environments", **Railway Track & Structures Magazine**. February 2002
97. Zarembski, A.M, Palese, Joseph W., and Katz, Leonid "Reduction of Dynamic Wheel/Rail Impact Forces at Grade Crossings Using Stiffness Transitions", **American Society of Mechanical Engineers, 2001 ImechE Congress**, New York, NY, November 2001
98. Zarembski, A.M., Palese, J.W., Bell, J.G., "Controlling Track Forces during Introduction of New High Speed Trains", **International Railway Journal**, October 2001
99. Zarembski, A.M., Turner, F., "Funding Infrastructure Upgrade Needs on Short Lines", **Railway Age Magazine**, December 2001.
100. Turner, R., Zarembski, A.M., "Helping Shortlines Meet the Challenges of HAL", published **Railway Track & Structures Magazine**, November 2001.
101. Lee, T., Zarembski, A.M., Weisgerber, J., "Use of New Generation Maintenance of Way Information System on Toronto Transit", **Railway Track & Structures Magazine**, May 2002.
102. Zarembski, A.M., Parker, L.A., Palese, J.W., Bonaventura, C., "Computerized Tie Condition Inspection and Use of Tie Condition Data in Cross-Tie Maintenance Planning", **International Heavy Haul Conference**, May 2003.
103. Zarembski, A.M., Parker, L.A., Palese, J.W., "Use of Comprehensive Tie Condition Data in Cross-Tie Maintenance Planning and Management on the BNSF", **American Railway Engineering Maintenance Association Annual Technical Conference**, September 2002.
104. Zarembski, A.M., Gauntt, J.C., "Development of a Tie Usage Index for Matching Wood Performance and Operating Conditions", **American Railway Engineering Maintenance Association Annual Technical Conference**, September 2002.
105. Zarembski, A.M., Bell, J.G., "Limiting the Effects of High-Speed Dynamic Forces on Track Structure", published **TR News**, September-October 2002
106. Bonaventura, C.S., Palese, J.W., Zarembski, A.M., "Real-Time Prediction of Railway Vehicle Response to the Interaction with Track Geometry", **International Heavy Haul Conference**, May 2003.
107. Zarembski, A.M., Blaze, J., "The Economics of Heavy Axle Loads: Costs and Benefits", published at the **Heavy Haul: The Solution for Europe's Future**, Paris, March 2003.

108. Zarembski, A.M., Blaze, J., "The Economics of Heavy Axle Loads: Costs and Benefits", **International Railway Journal**, April 2003.
109. Zarembski, A.M., Palese, J.W., "Risk Based Ultrasonic Rail Test Scheduling: Practical Applications in Europe and North America, **Conference Contact Mechanics and Wear of Rail/Wheel Systems (CM2003)**, Gothenberg, Sweden, June 2003.
110. Zarembski, A.M., Resor, R. R., Patel, P., "Economics of Wayside Inspection Systems", **2003 ASME International Mechanical Engineering Congress and Exposition (IMECE'03)**, Washington, DC, November 16-21, 2003.
111. Zarembski, A.M., Weisgerber, J., "Implementation of a New Generation of Maintenance of Way Information Systems for Transits", **AREMA 2003 Annual Conference & Exposition**, Chicago, IL, October 5-8, 2003.
112. Bonaventura, C.S., Palese, J.W., Zarembski, A. M., "Field Evaluation and Deployment of a Track Geometry Car Based Real-Time Dynamics Simulator", **AREMA 2003 Annual Conference & Exposition**, Chicago, IL, October 5-8, 2003.
113. Bonaventura, C.S., Zarembski, A.M., Palese, J.W., Holfeld, D.R., "Increasing Speeds through the Diverging Route of a Turnout without Increasing Lead Length", **83<sup>rd</sup> TRB Annual Meeting**, Washington, DC, January 11-15, 2004.
114. Resor, R.R., Zarembski, A.M., Patel, P., "Factors Determining the Economics of Wayside Defect Detectors", **83<sup>rd</sup> TRB Annual Meeting**, Washington, DC, January 11-15, 2004.
115. Bonaventura, C.S., Palese, J.W., Zarembski, A.M., "Performance of a Track Geometry Car-Based Real-Time Dynamics Simulator using Multiple Vehicle Types, **2003 ASME International Mechanical Engineering Congress and Exposition (IMECE'03)**, Washington, DC, November 16-21, 2003.
116. Blaze, J., Zarembski, A.M., "Lessons from the North American Rail/Intermodal Experience: Integrating Technical Engineering with Strategic Business Planning", **IRCA Rail International – Schienen der Welt**, May 2004.
117. Zarembski, A.M., "Engineering of Railway Tracks", **Kerr Symposium on Engineering Mechanics**, University of Delaware College of Engineering, Newark, DE, April 29-30, 2004.
118. Zarembski, A.M., Grissom, G.T., Henry M. Lees, "Development of Track Buckling Risk Analysis Methodology", **AREMA 2004 Annual Conference & Exposition**, Nashville, TN, September 19-22, 2004.
119. Bonaventura, C.S., Zarembski, A.M., Palese, J.W., Holfeld, D.R., "Increasing Speeds through the Diverging Route of a Turnout Without Increasing Lead Length, **Railway Track & Structures**, July 2004

120. Palese, J.W., Euston, T. L., Zarembski, A.M., "Use of Profile Indices for Quality Control Grinding", **AREMA 2004 Annual Conference & Exposition**, Nashville, TN, September 19-22, 2004.
121. Zarembski, A.M., Grissom, G.T., Lees, H.M., "Assessing the Risk of Track Buckling", **Railway Track & Structures Magazine**, February 2005.
122. Bonaventura, C.S., Zarembski, A. M., Palese, J.W., "TrackSafe: A Track Geometry Car Based Real-Time Dynamics Simulator", **ASME 2005 Joint Rail Conference**, Pueblo, CO, March 16-18, 2005.
123. Palese, J.W., Zarembski, A.M., "Practical Applications of Risk Based Ultrasonic Rail Test Scheduling in Europe and North America, **Asset Management for Railway Infrastructure Asia 2005**, Singapore, February 23-24, 2005.
124. Zarembski, A.M., Holfeld, D.H., "The Importance of Safe and Efficient Railroad Operations for Coal Power Plants," **EnergyPulse**, April 11, 2005.
125. Zarembski, A.M., Palese, J.W., "Assessing and Managing Risk on the Railway Track", **International Railway Journal**, May 2005.
126. Zarembski, A.M., Palese, J.W., Euston, T.L., "Monitoring Grinding Effectiveness Using Grinding Quality Indices", **Railway Track & Structures**, June 2005
127. Gauntt, J.C., Zarembski, A.M., "On the Use of 6" x 8" Timber Cross-Ties in Low Density Heavy Axle Load Operations", **2005 AREMA Annual Conference**, Chicago, IL, September 25-28, 2005
128. Zarembski, A.M., Palese, J.W., "Characterization of Broken Rail Risk for Freight and Passenger Railway Operations", **2005 AREMA Annual Conference**, Chicago, IL, September 25-28, 2005
129. Bonaventura, C.S., Holfeld, D.R., Zarembski, A.M., Palese, J.W., "Test Results of a Modified Turnout Designed to Increase Diverging Route Speeds Without Increasing Lead Length", **2005 AREMA Annual Conference**, Chicago, IL, September 25-28, 2005
130. Zarembski, A.M., Euston, T.L., Palese, J.W., "Use of Track Component Life Prediction Models in Infrastructure Management", **AusRail Conference and Exhibition**, Sydney, November 2005
131. Bonaventura, C.S., Holfeld, D.R., Zarembski, A.M., "Optimizing Vehicle Dynamics Through a Switch While Maintaining Existing Switch Lead Length", **2006 ASME Joint Rail Conference**, Atlanta, April 2006
132. Zarembski, A.M., Palese, J.W., "Management of Broken Rail Risk" ("Gestion du risqué de rupture du rail"), **LeRail**, January 2006

133. Zarembski, A.M., Palese, J.W., Bonaventura, C.S., " Use of Hand Held Computers (PDAs) for Track Inspection and Maintenance" ("Utilisation d'ordinateurs de poche (PDA) pour le contrôle et la maintenance des voies"), **LeRail**, February/March 2006.
134. Zarembski, A.M., Palese, J.W., "Managing Risk on the Railway Infrastructure", **World Congress of Railroad Research**, Montréal, Canada, June 2006.
135. Zarembski, A.M., Bonaventura, C.S., Palese, J.W., "Real Time Analysis of Track Geometry to Control Derailment Risk", **Rail Quarterly/LeRail**, June 2006
136. Zarembski, A.M., "Advances in the Use of Hand Held Computers for Track Inspection and Maintenance Management," **Railway Track & Structures**, August 2006
137. Zarembski, A.M., Bonaventura, C.S., Holfeld, D.R., "Development of Maintenance Indices for Turnouts", **AREMA 2006 Annual Conference**, Louisville, KY, September 2006
138. Zarembski, A.M., Palese, J.W., Euston, T.L., "Using Real Time Quality Control to Manage Rail Grinding", **Interface The Journal of Wheel/Rail Interaction** ([www.interfacejournal.com/features/07-06](http://www.interfacejournal.com/features/07-06)), July 2006
139. Zarembski, A.M., Gauntt, J.C., Grissom, G.T., Palese, J.W., "Field Demonstration of the Use of Track Strength Data to Optimize Tie Replacement Requirements", **AREMA 2007 Annual Conference & Exposition**, Chicago, IL, September 2007
140. Zarembski, A.M., Palese, J.W., "Use of Risk Management in Improving Track Safety", **AREMA 2007 Annual Conference & Exposition**, Chicago, IL, September 2007
141. Zarembski, A.M., Palese, J.W., "Improving Track Safety with New Generation Risk Management Tools", **Railway Track & Structures**, September 2007
142. Palese, J.W., Zarembski, A.M., "The Economics Of Heavy Axle Loads:Costs, Benefits, And Engineering Issues", **ExpoRail 2007**, India, October 2007
143. Zarembski, A.M., "Engineering and Economics Issues for Heavy Axle Load Operations", **IPWE 2008 Conference**, India, February 2008
144. Zarembski, A.M., "Use of Risk Management in Improving Track Safety", **IPWE 2008 Conference**, India, February 2008
145. Zarembski, A.M., "The Benefits of Rail Grinding", **IPWE 2008 Conference**, India, February 2008
146. Bonaventura, C.S., Zarembski, A.M., Palese, J.W., "Switch and Crossing Inspections and Maintenance Management Using Handheld Computers", **4th IET International Conference on Railway Condition Monitoring (RCM 2008)**, Derby, UK, June 2008
147. Zarembski, A.M., Cikota, J.F., "Estimating Maintenance Costs for Mixed High-Speed Passenger and Freight Rail Corridors", **TR News**, March-April 2008.

148. Zarembski, A.M., "Rail Grinding as Part of Rail Management Strategy", **Railway Track & Structures**, June 2008
149. Zarembski, A.M., Newman, G.R., "Comparative Technical and Economic Analysis of Stoneblowing vs. Tamping", **AREMA 2008 Annual Conference and Exposition**, Salt Lake City, UT, September 2008
150. Zarembski, A.M., Holfeld, D.R., "Safe and Efficient Maintenance for Utility and Mine Tracks", **Coal Transporter Magazine**, Issue 2, 2007
151. Zarembski, A.M., "New Technologies for Ballast and Track Geometry Maintenance", **Coal Transporter Magazine**, Issue 2, 2009
152. Zarembski, A.M., "Development of Guidelines for Broken Rail Risk", **Railway Track & Structures**, October 2009
153. Zarembski, A.M., "Automated Planning of Wear Based Rail Replacement", **Railway Track & Structures**, January 2010
154. Palese, J.W., Zarembski, A.M., "A Total Rail Maintenance Strategy for HAL Railways", **IPWE**, India, 2010.
155. Zarembski, A.M., Patel, P. K., "Estimating Maintenance Costs For Mixed Higher Speed Passenger and Freight Rail Corridors", **ASME/IEEE/AREMA Joint Rail Conference 2010**, Urbana, IL, April 2010.
156. Zarembski, A.M., "Management of Broken Risk for High Speed Passenger Rail", **ASME/IEEE/AREMA Joint Rail Conference 2010**, Urbana, IL, April 2010.
157. Zarembski, A.M., Bonaventura, C.S., "Dynamic Effects of Track Surface Condition on Vertical Wheel/Rail Forces and Energy Consumption", **ASME/IEEE/AREMA Joint Rail Conference 2010**, Urbana, IL, April 2010.
158. Zarembski, A.M., Palese, J.W., "Evaluation of the Effectiveness of Rail Grinding on Reducing Rail Defects on North American Class 1 Railroad", **AREMA 2010 Annual Conference and Exposition**, Orlando, FL, August 2010
159. Holfeld, D.R., Bonaventura, C.S., Zarembski, A.M., "Field Results of a Modified Turnout Designed to Increase Diverging Route Speeds without Increasing Lead Length", **AREMA 2010 Annual Conference and Exposition**, Orlando, FL, August 2010
160. Zarembski, A.M., "Grinding of Turnouts and Special Trackwork" **Railway Track & Structures**, June 2010
161. Zarembski, A.M., Rail Maintenance Planning and Management Using State of the Art Maintenance Management Software, **International Railway Journal**, November 2010.

162. Zarembski, A.M., "High Speed Rail Grinding for High Speed Rail", **7th World Congress on High Speed Rail**, Beijing, China, December 2010.
163. Zarembski, A.M., Palese, J. W., "Does Rail Grinding Reduce Rail Defects", **RT&S**, February 2011
164. Zarembski, A.M., "Engineering Higher Speed Rail", **Railway Age**, March 2011
165. Zarembski, A.M., Euston, T.E., Palese, J.W., "Development, Implementation, and Validation of an Automated Turnout Inspection Vehicle", **IHHA 2011**, Calgary, Canada, June 2011
166. Bonaventura, C.S., Zarembski, A.M., Palese, J.W., "Determination of Optimum Intervention Time for Track Surfacing Based on Economic Minimization of Maintenance Costs", **IHHA 2011**, Calgary, Canada
167. Zarembski, A.M., "Management of Total Rail Grinding Maintenance Process", **Railway Track & Structures**, June 2011